

Portaflow 300 and SE data download using PortaGraph Software

Introduction

This application note is designed to offer assistance in downloading data from the Portaflow 300 and SE units to the PC using optional PortaGraph software. Please follow the instructions in the manuals for the Portaflow end of the link.

- ❖ Download with Portagraph software application

Download with Portagraph software application

Note:

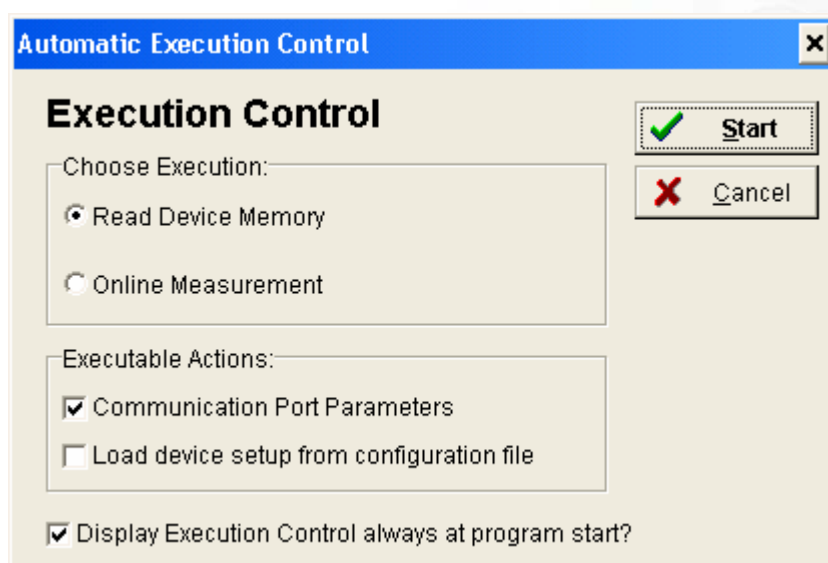
This application note covers PC applications only and not MAC or other operating systems. This will cover Microsoft Windows operating systems such as Windows 95, 98, 2000, NT, XP

The concept is as follows:

- Step 1: Open application
- Step 2: Setup COM ports
- Step 3: Connect to Portaflow unit
- Step 4: Start session and download from Portaflow unit
- Step 5: Import file into a spreadsheet application such as Microsoft Excel.
- Step 6: Making an online measurement

Step 1: Open Application

The Portagraph application is typically found under *Programs > Portagraph* or through the command line as *portagraph.exe*. The application may need to be added through the Windows Control Panel "Add Windows Programs" facility.

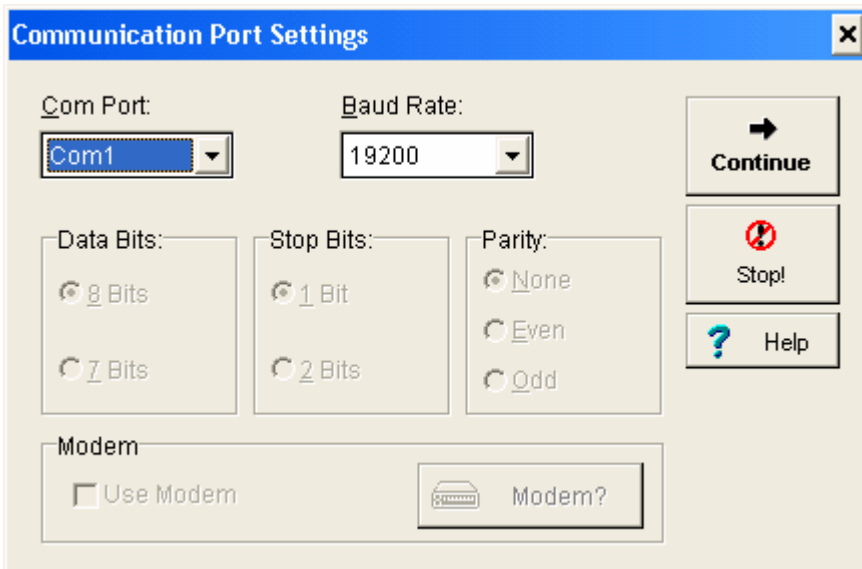


Start Application. The software will give the user to the option to read the device memory or make a real time online measurement. This can be accessed at any time through *Settings>Automatic Execution Control*

It is possible to set the Communication port parameters manually (see next screen) or load the setup from a previously saved configuration file.

Press Start

Step 2: Setup COM ports



Set the Com port and baud rate to match your metering equipment. See below for Portaflow settings

Press Continue

Com Port= COM1 from the drop down menu

Most COM port settings may be already setup, ensure bits per second is set to 19200(Baud Rate).

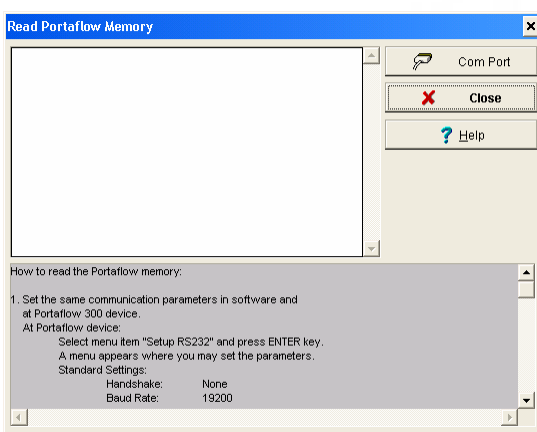
Note:

When using USB ports Windows may assign another number such as COM 5,6,7,8.

Also if you have another device attached to your PC such as Palm Pilot or network adapter this may take up COM port assignments – especially where laptops are concerned. Models from 2004 onwards may also not have an RS232 adapter.

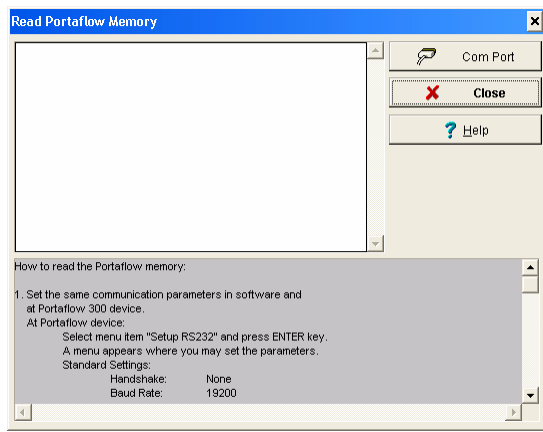
You may need to reassign ports within windows, see your IT administrator if this is the case

Step 3: Connect to Portaflow unit and test connection



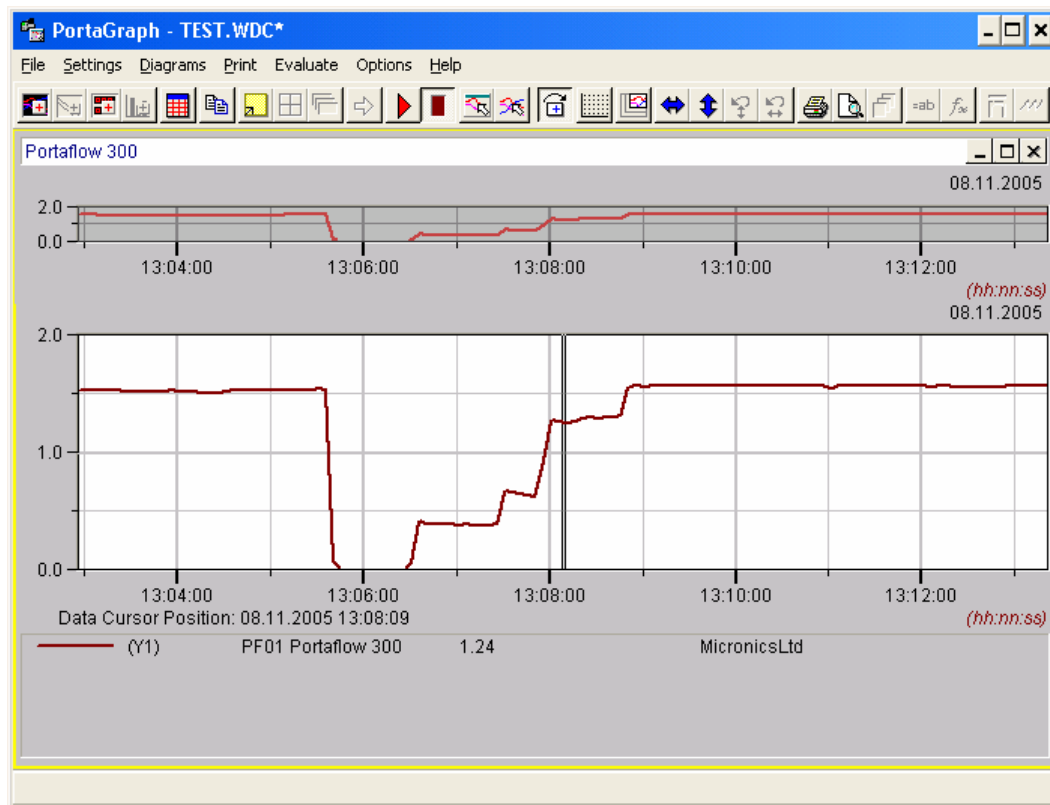
After pressing continue at step 2, connect the Portaflow unit to the PC with the RS232 lead – with USB ports you will also need an adapter. On the Portaflow select the *RS232 menu > printer test* and you should see a pattern appear on the screen. This will confirm that the communication path is ready for download.

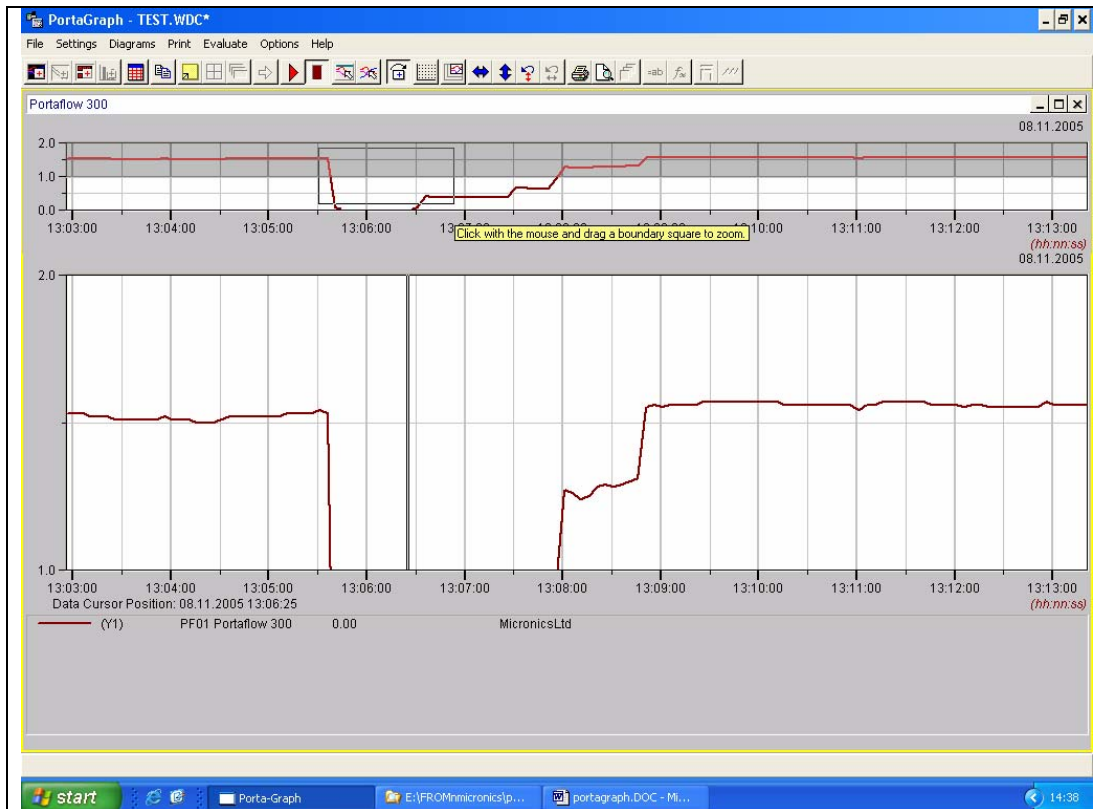
Step 4: Start session and download from Portaflow unit



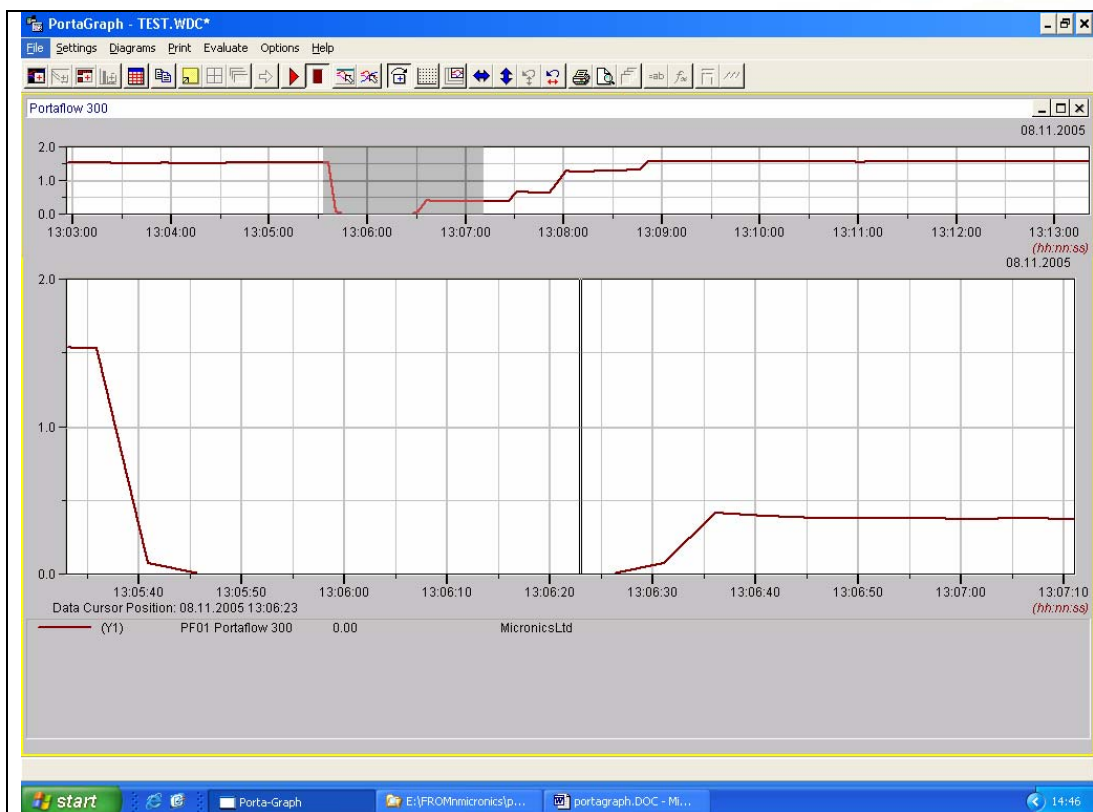
Select "Data Logger" in the main menu at Portaflow device.
Then choose the menu item "Download log".
With the items "First block to download" and "Last block to download" you may determine the first and the last data block of the Portaflow device to be sent.
You may now start transferring the data by choosing the menu item "Download range to RS232" at Portaflow device. The data will now be listed on the screen.

Once data has all been downloaded, select **X Close**. This will transfer the downloaded data into a graph.





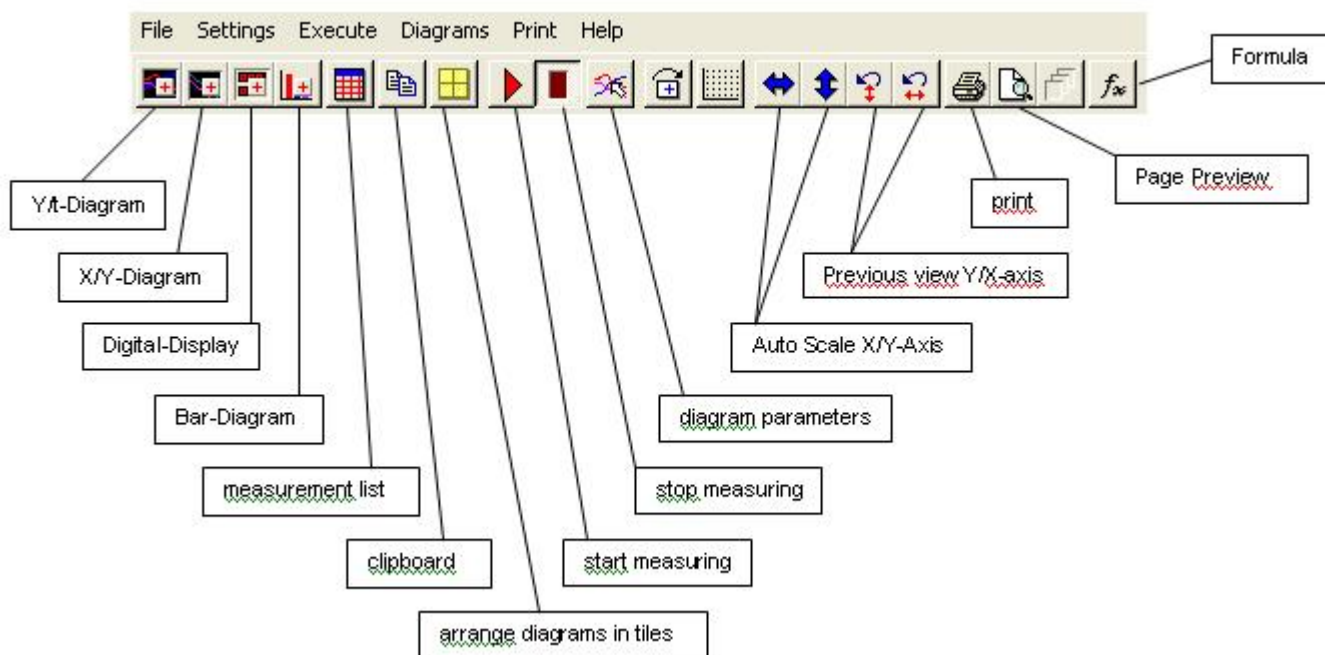
The top graph shows the total downloaded data and allows the user to highlight an area that requires magnification, on releasing the mouse button, the bottom view will zoom to show the selected area. It is also possible to zoom by highlighting an area in the lower graph.



The bottom view graph has updated to show the highlighted area in the top view graph. By clicking at any point along the bottom graph it is possible to see instantaneous values at any given point along the recorded data.


Step 5: Import file into a spreadsheet application such as Microsoft Excel.

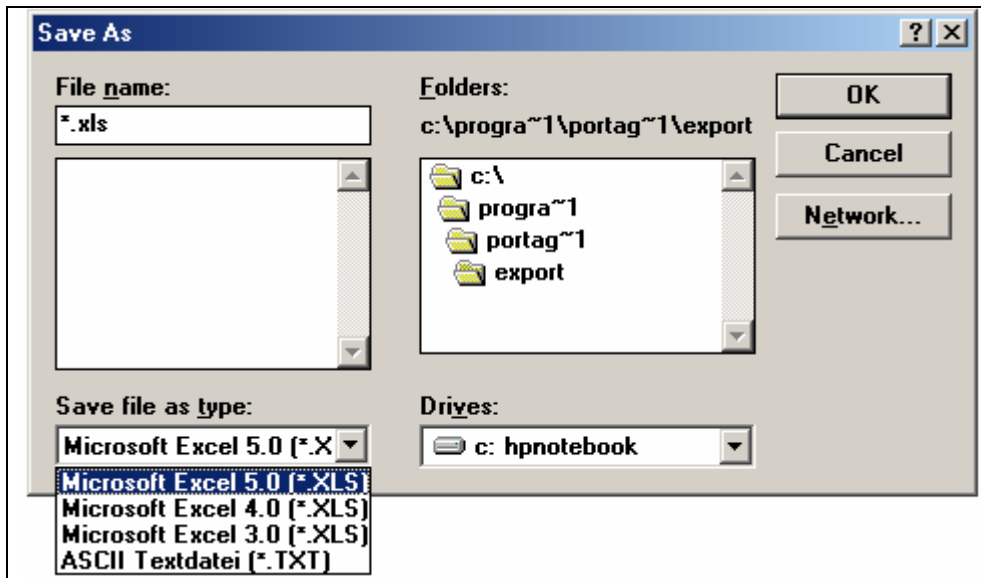
On the menu bar, click on the measurement list button.



This opens the Measuring Data List window below

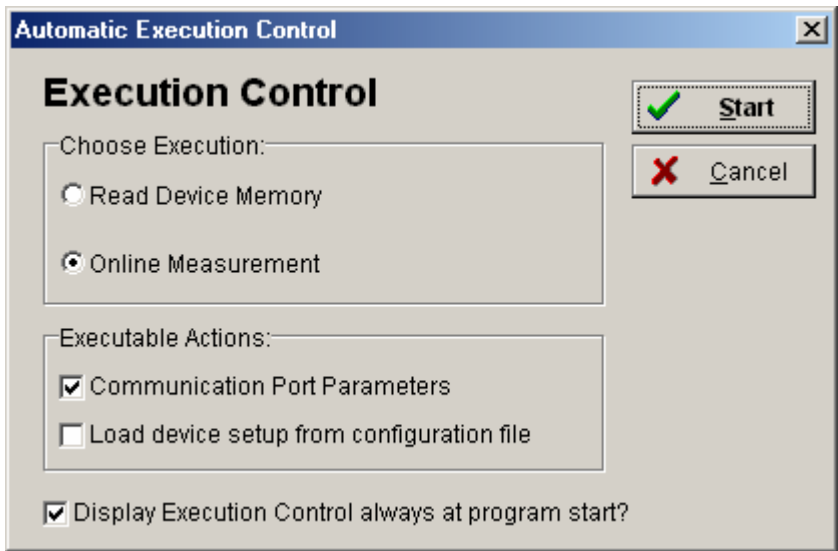
Measuring Data List		
No.	Date/Time	PF01 Portaflow 300 l/h
1	27.08.1999 13:09:52	3.62
2	27.08.1999 13:09:57	3.60
3	27.08.1999 13:10:02	3.58
4	27.08.1999 13:10:07	3.54
5	27.08.1999 13:10:12	3.58
6	27.08.1999 13:10:17	3.62
7	27.08.1999 13:10:22	3.64
8	27.08.1999 13:10:27	3.60
9	27.08.1999 13:10:32	3.60
10	27.08.1999 13:10:37	3.68
11	27.08.1999 13:10:42	3.62
12	27.08.1999 13:10:47	3.58
13	27.08.1999 13:10:52	3.58
14	27.08.1999 13:10:57	3.60
15	27.08.1999 13:11:02	3.58
16	27.08.1999 13:11:07	3.54
17	27.08.1999 13:11:12	3.56
18	27.08.1999 13:11:17	3.56
19	27.08.1999 13:11:22	3.56
20	27.08.1999 13:11:27	3.56

Click on the save to file button on the top far left of the Measuring Data List window . This will open Save As window.



It is possible to save the data as an Excel file or as a plain text file by selecting Save file as type. Choose your file name and location on your hard drive and click OK. This will create a file that can be opened in Excel.

Step 6: Making an online measurement

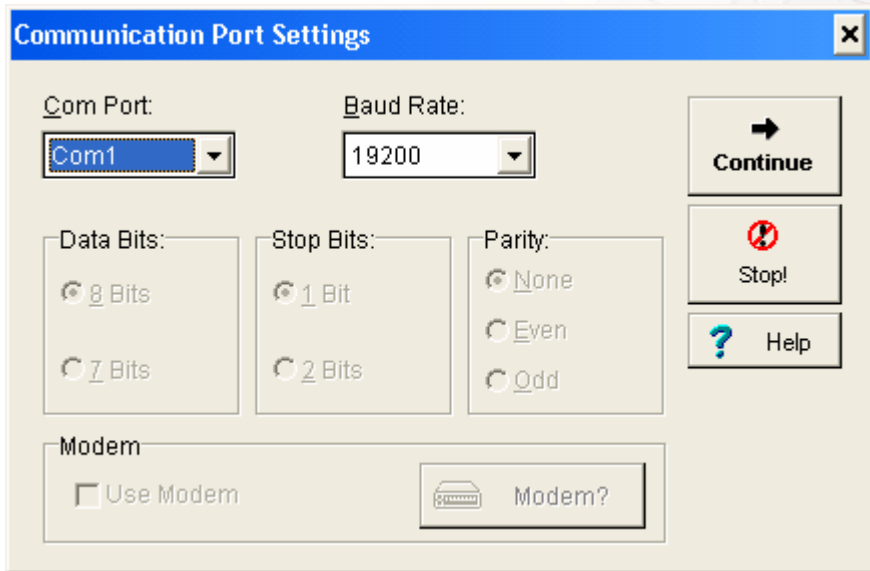


Start Application. The software will give the user to the option to read the device memory or make a real time online measurement. This can be accessed at any time through *Settings>Automatic Execution Control*.

Select Online Measurement.

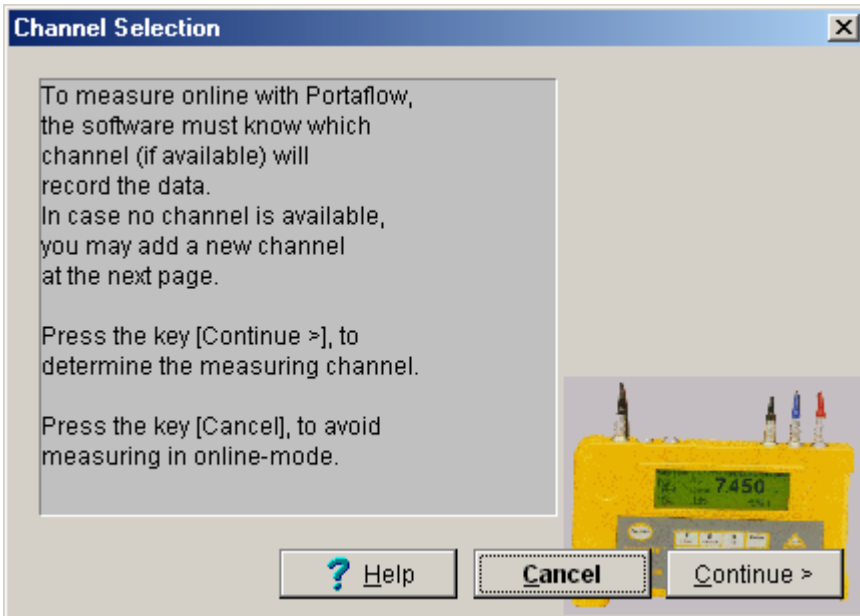
It is possible to set the Communication port parameters manually (see next screen) or load the setup from a previously saved configuration file.

Press Start



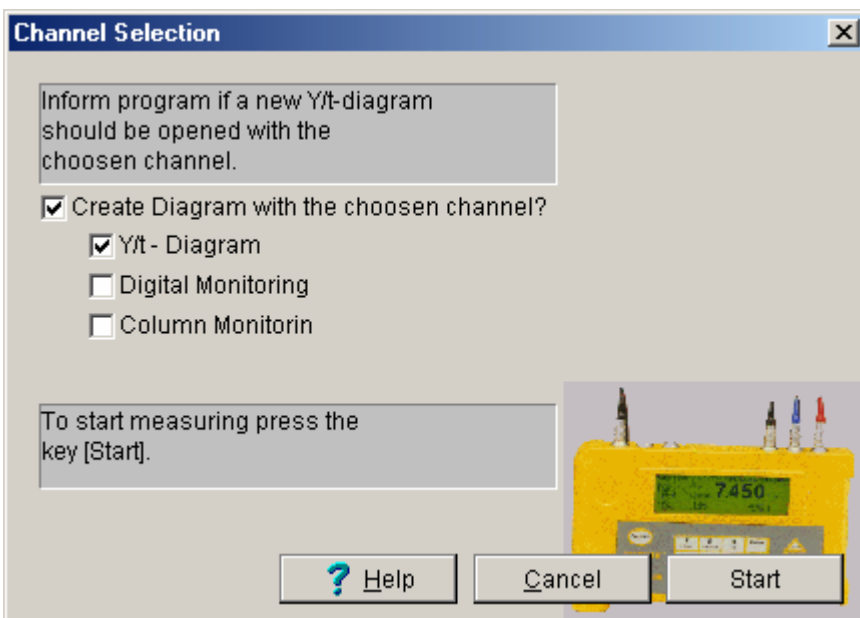
Set the Com port and baud rate to match your metering equipment. See below for Portaflo settings

Press Continue



The next window is the Channel Selection alert.

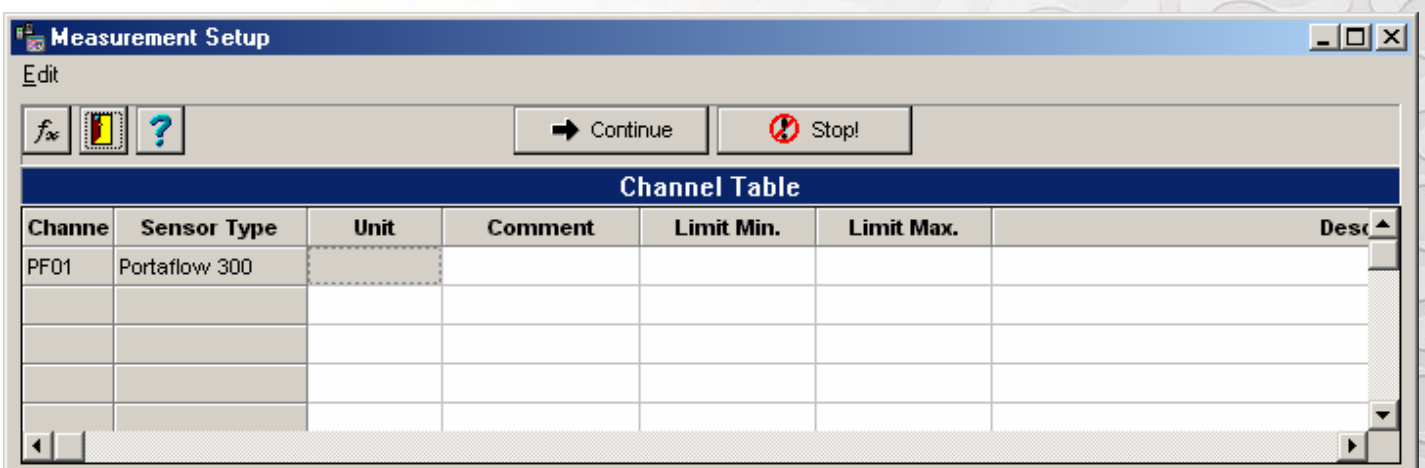
Press Continue

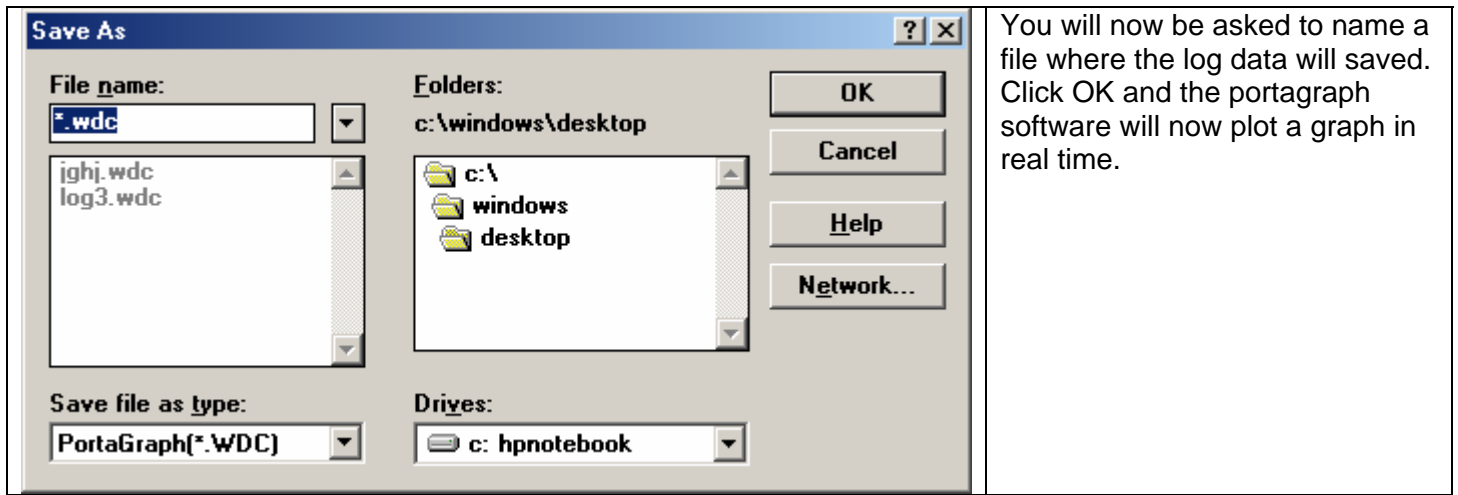


The next window is the Channel Selection Diagram type. This window allows the user to see the graph being plotted on screen and how they would like the information to be shown. It is also possible to just record the log data direct to file (see next step). In both cases

Press Start

The next window allows the user to set up the units to be displayed, the minimum and maximum limits for the graph, a description of the information and the digits after decimal point. There is also a column for entering a formula (please see help file under Formula Enter/Edit). Press Continue.





- Connect the Portaflow unit to the PC with the RS232 lead – with USB ports you will also need an adapter. After setting up the portaflow to read flow press:
- Logger>Log data to>Memory and RS232. Set up the other logging parameters as required.
- Exit and read flow
- Press *Enter* 2 times on the portaflow keypad. This will bring you to the MAIN MENU, scroll to *Data Logger>Download Log* and then press enter.